

HAKOPIKE EXHIBITION

—+ Catalogue

2023

Bali, Indonesia

This is a collection of Hakopike's art ranging from rolled canvas pieces, printed illustrations and stretched canvas pieces as well as painted tote bags. All pieces are completely with acrylic paint.

Celestial Deities

Hakopike is an artist from Cape Town, South Africa who specialises in acrylic painting exploring her mixed heritage while travelling through Indonesia, Japan and South Africa.

1995

March 25

Amy-Leigh was born and raised in Johannesburg South Africa and has a B.A degree in Film Production and English Literature. She has lived in Cape Town for 7 years and taught in South Korea for 2.

Synopsis

Celestial Deities is a collective exploration of redefined womanhood, artistry and shared experiences in relation to those who came before us.

It is the acknowledgement of historical trauma with the following steps: Acknowledgement, Embracement, Redefining, and Validating.

“The Sirens of Sanity”

Series: Celestial Deities

This artwork focuses on the first phase of Celestial Deities: “Acknowledgement”. Inspired by rock art found in South Africa the ancient symbols represented in this artwork draw a comparison to the historical ancestry attached to people of colour.

The sirens are the mythological creatures the artist has created which represents the fact that a lot of ancestry is depicted through “oral stories” which can some times be misunderstood as it is retold many times again through generations.

This draws the audience to realise that the mental effect of not fully knowing where one comes from that can lead them to a place far from sanity. They are led to a place where their history could be compared to that which is unreal.

Sizes: A1, A3



“The Ones Who Came Before”

Series: Celestial Deities

This artwork focuses on the first phase of Celestial Deities: “Acknowledgement”.

Inspired by rock art found in South Africa the ancient symbols represented in this artwork draw a comparison to the historical ancestry attached to people of colour.

The ones who came before refers to ancestors who have led a path that we now continue to pass on. They are entities that are reliant on memories, intuition and oral stories.

Sizes: A1, A3



“I Lost My Witness”

Series: Celestial Deities

This artwork focuses on the first phase of Celestial Deities: “Acknowledgement”.

Inspired by rock art found in South Africa the ancient symbols represented in this artwork draw a comparison to the historical ancestry attached to people of colour.

The witness in this piece refers to the person who has seen you through all your forms. It could be anybody who is from your past or from your ancestry who looks over you. However, when this witness is no longer present - there is a deep loss. There is nobody to witness your experiences besides yourself.

It is the acknowledgement that witnesses are vital in validating one’s existence.

Sizes: A3



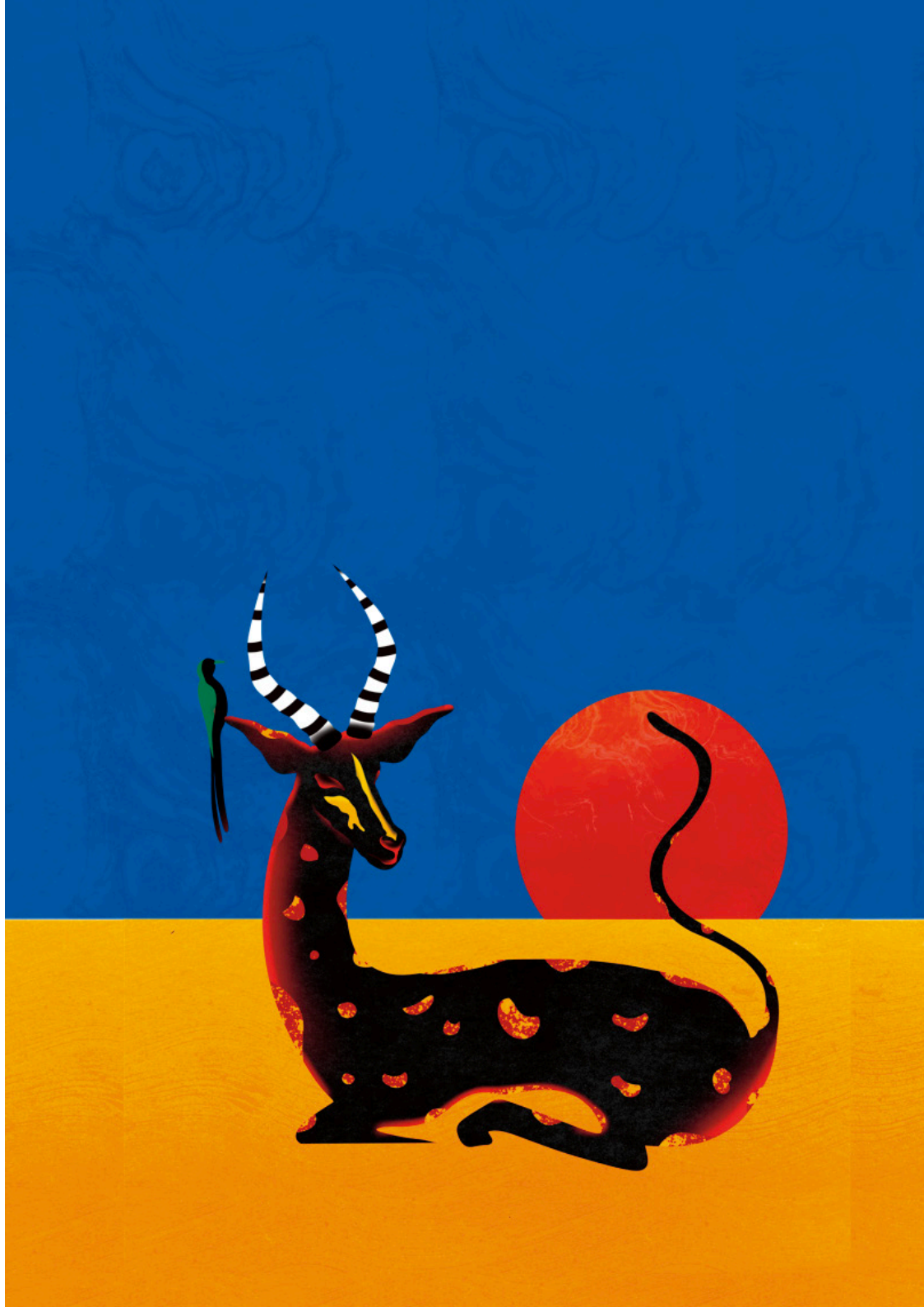
“The Source”

Series: Celestial Deities

This artwork focuses on the first phase of Celestial Deities: “Acknowledgement”. Inspired by rock art found in South Africa the ancient symbols represented in this artwork draw a comparison to the historical ancestry attached to people of colour.

As the ancient looking springbok looks towards the unknown it sits in a place that appears otherworldly. This piece establishes the world that I have created where I have internalised my history and meditated on the world I am creating.

Sizes: A1, A3



“The Duality”

Series: Celestial Deities

This artwork focuses on the first phase of Celestial Deities: “Embracement”.

Inspired by South African national symbols - which is a way of appreciating one’s country and being patriotic.

The Protea is South Africa’s national flower and in this series it represents beauty through change.

The woman is faced with duality of heritage. She has a flower on her left which has been seen in similar forms in Bali and Japan and she has the Protea hanging over her right side.

The series brings up questions of identity, and this piece shows the duality of ancestry which is mixed, and can cause conflict within one individual who must balance both sides or deny the validity of one.

Sizes: A3



“The Aniseed”

Series: Celestial Deities

This artwork focuses on the first phase of Celestial Deities: “Redefining”.

This piece depicts a cheetah which I have made inverted, black fur with orange spots. He is looking on to a woman who has a spice called Aniseed in the center of her chest.

In South African dishes, aniseed is used to bring life to them, it is used in a lot of dishes such as chicken bryani. A lot of South African dishes stem from Cape Malay heritages, which is also tied to this series as it forms a part of the artists’ heritage.

Food feed us, and our souls. This piece represents the richness of it all.

Sizes: A3



“In flames, In Fame”

Series: Celestial Deities

This artwork focuses on the first phase of Celestial Deities: “Redefining”.

This is a piece focused on identity and being seen. The moment one is seen as their truest selves they can feel overwhelmed because they have felt invisible for so long.

Sizes: A3



“The Scorpion”

Series: Celestial Deities

This artwork focuses on the first phase of Celestial Deities: “Redefining”.

This piece depicts a scorpion in a desert where it has chosen not to go to the water to replenish itself.

Sizes: A3



“The Blue Crane”

Series: Celestial Deities

This artwork focuses on the first phase of Celestial Deities: “Embracement”. Inspired by South African national symbols - which is a way of appreciating one’s country and being patriotic.

The Blue Crane is South Africa’s national bird and in this series it represents resilience through difficulty.

The scorpion is in a desert where it has chosen not to go to the water to replenish itself. However the Blue Cranes face the water because they see its importance.

Sizes: A3



“Bye Bye Bokkie”

Series: Celestial Deities

This artwork focuses on the first phase of Celestial Deities: “Embracement”.

Inspired by South African national symbols - which is a way of appreciating one’s country and being patriotic.

The Protea is South Africa’s national flower and in this series it represents beauty through change.

The animal in the centre is a Springbok which is also one of South Africa’s most famous animals which are known for their beauty, speed and lightness.

The man looks on - as does the bokkie. “Bokkie” is an endearing term and it is also a word used for a small Springbok. Both the bokkie and the man are going through a change. The innocent nature within the man is changing as he goes through life and faces its difficulties.

Sizes: A3



“The Duality”

Series: Celestial Deities

This artwork focuses on the first phase of Celestial Deities: “Embracement”. Inspired by South African national symbols - which is a way of appreciating one’s country and being patriotic.

The Protea is South Africa’s national flower and in this series it represents beauty through change.

The woman is faced with duality of heritage. She has a flower on her left which has been seen in similar forms in Bali and Japan and she has the Protea hanging over her right side.

The series brings up questions of identity, and this piece shows the duality of ancestry which is mixed, and can cause conflict within one individual who must balance both sides or deny the validity of one.

Sizes: Roughly A3



“Coelacanth”

Fossil vis

Series: Celestial Deities

This artwork focuses on the first phase of Celestial Deities: “Redefining”.

The Coelacanth is a fish that dates back to 65 million years ago and was thought to be extinct. It is a fossil fish that has been found in 1938 off the coasts of South Africa and there is also a Indonesian Coelacanth.

This artwork shows that what we once thought was extinct no longer is. And that we can dig up history through our own storytelling, just like the Coelacanth returned from the other side, perhaps our own ancestors could do the same. Maybe not in a physical form but in a spiritual one.

Sizes: Roughly A0



“The Aniseed”

Series: Celestial Deities

This artwork focuses on the first phase of Celestial Deities: “Redefining”.

This piece depicts a cheetah which I have made inverted, black fur with orange spots. He is looking on to a woman who has a spice called Aniseed in the center of her chest.

In South African dishes, aniseed is used to bring life to them, it is used in a lot of dishes such as chicken briyani. A lot of South African dishes stem from Cape Malay heritages, which is also tied to this series as it forms a part of the artists’ heritage.

Food feed us, and our souls. This piece represents the richness of it all.

Sizes: Roughly A0

